

# BAR STOCK THERMOWELL -FLANGE CONNECTION SSKE33-4

## APPLICATIONS

- Air filters & HVAC
- Tanks applications
- Corrosive Environments,
- Power & Steel Industries
- Oil & Gas Applications
- On -shore /Off-shore application

## FEATURES

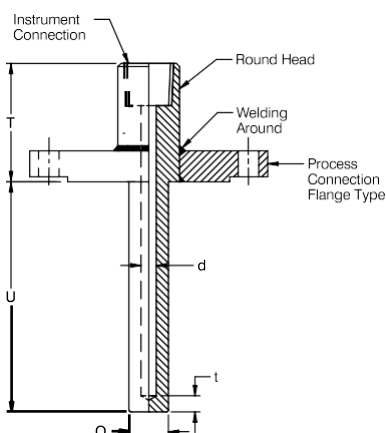
- Made from Solid Bar stock
- Available in Taper /Partial Taper /Straight Type
- Process Connection -Flange



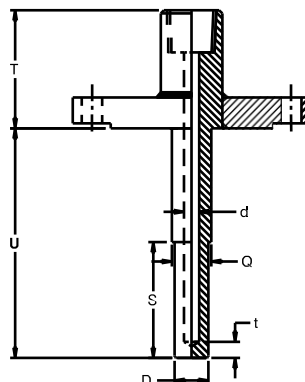
BAR STOCK THERMOWELL -FLANGE CONNECTION SSKE33-4

## GA DRAWING

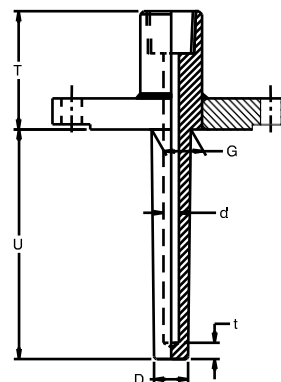
Straight Thermowell



Step Thermowell



Taper Thermowell



### NOTES

1. Standard GA Drawing. Not to scale.
2. Detailed GA Drawings are available, kindly contact factory.

## DESCRIPTION

### General

**Well design:** ASME PTC 19.3 TW: 2010  
**Thread design :** ANSI B1.20.1 /BS EN ISO 228-1  
**Process Connection :** Flange Type  
**Instrument Connection :** Threaded  
**Head :** Round Head  
**Hydro Test Pressure :** 100 bar

### Material of construction

**Thermowell Material :** AISI 304 SS /AISI 316 SS/  
 AISI 316L SS /INCONEL /Carbon Steel/  
 AISI310SS/AISI 446 SS / AISI 321 SS & Alloy 20

### Standard version

**Shank and Material :** Taper Type and AISI 316 SS  
**Instrument connection :** 1/2" NPT (F) /1/2" BSP (F)  
**Process connection :** Flange as per standard  
**Well size:** Major Diameter 21 mm &  
 Minor Diameter 16.0mm  
**Lag Extension:** 45 mm  
**Immersion Length :** 250mm  
**Tip Thickness:** 5 mm  
**Type / Size :** Round 27 mm

# BAR STOCK THERMOWELL -FLANGE CONNECTION SSKE33-4

## ORDERING CODES

<b>MODEL</b>										<b>SSKE33-4</b>		
SSKE33-4 -Barstock Thermowell -Flange Connection												
<b>FLANGE MATERIAL</b>												
S03	AISI 316L SS	S02	AISI 316 SS	S26	AISI 346 SS	S06	Inconel 600	S23	AISI 310 SS		S25	AISI 321 SS
<b>WELL MATERIAL</b>												
S03	AISI 316L SS	S02	AISI 316 SS	S26	AISI 346 SS	S06	Inconel 600	S23	AISI 310 SS		S25	AISI 321 SS
<b>WELL TYPE</b>												
STR	STRAIGHT	STE	STEPPED	TAP	TAPERED							
<b>INSTRUMENT CONNECTION</b>												
P28	½" NPT (F)	P23	¼" BSP (F)	P27	½" BSP (F)	P29	¾" BSP (F)	P30	¾" NPT (F)			
<b>PROCESS CONNECTION-FLANGE TYPE</b>												
XXX - Flange Standard Type-Order Code Refer Flange Table												
<b>FLANGE FACING</b>												
G1	RAISED FACING	G2	FLATE FACE	G3	RING JOINT TYPE							
<b>LAG EXTENSION</b>												
XX	35 mm to 150 mm											
<b>WELL ROOT &amp; TIP DIAMETER</b>												
XX & XX - in mm												
<b>WELL BORE DIAMETER</b>												
BD06	6.6 mm	BD07	7.0 mm	BD08	9.0 mm	BD10	9.6 mm	BD11	11 mm		BD13	13 mm
<b>IMMERSION LENGTH</b>												
XXX	50 mm up to 1000 mm											
<b>WELL TIP THICKNESS</b>												
ET1	5 mm	ET2	6.35 mm	ET3	10 mm							
<b>OTHER OPTIONS</b>												
E84	Plug & Chain inSS			E17	Material test certificate 3.1		E21	Material test certificate 2.2				
E83	Marking by engraving			E85	Dye penetration test		E90	Hydro test certificate				

**Ordering Example : SSKE33-4.S03.S03.TAP.P28.P08.G1.XX.XX.BD06.XXX.ET1.E84/E90**